



ELSHERE
HEREFORDS

Established 2012

5TH ANNUAL
BULL SALE

MON. DEC. 20, 2021
12 NOON • FAITH (SD) LIVESTOCK

ELSHERE HEREFORDS

Established 2012

5TH ANNUAL BULL SALE

MON. **DEC. 20, 2021**
12 NOON • FAITH (SD) LIVESTOCK

AUCTIONEER

Rowdy Benson 605/569-1493

DELIVERY

Free delivery within western South Dakota.

SEMEN TESTING

Semen testing and trich testing done Nov. 2021.

GUARANTEE

First breeding season guarantee.

WEIGHTS

Birth weight, weaning weight and yearling weight are actual measured weights. Birthweights are measured using a hanging scale.

EPDs

Catalog EPDs are current as of Nov. 15, 2021.

SALE REPRESENTATIVES

Cole Elshere 605/ 200-1329

Andy Elshere 605/ 788-2812

Visit online for more information...

ElshereRanch.com

CATTLE USA.com LIVE CATTLE AUCTIONS

Potential buyers may also view auction and bid online at...
www.cattleusa.com

If you plan to bid online, YOU MUST pre-register with Cattle USA two (2) days prior to Elshere sale ...pre-register by Dec. 18, 2021.

- 1) Log in to www.CattleUSA.com
- 2) Push the Submit button next to Faith Livestock. The first time you do this, a form will pop-up for you to fill out your contact information. Fill out your information, then push the button at the bottom of the form to continue.
- 3) Your information is sent to Faith Livestock. The auction will now be able to find you in their database and approve you to buy.
- 4) Once pre-registered, please call Faith Livestock, 605/ 967-2200 to confirm that you are approved for bidding.

REFERENCE SIRES



CC 77J STERLING 39T

Calved: January 31, 2007

AHA#: 43158252

FE 07Y SUPER 129D
CC 129D SUPERMAN 77J
 #43099394 CC 42W JULIANA 66Z

JDA 15W SKYWALKER 07Y
 FE 412 DANDY 56X
 DMF 81N STANDARD 42W
 CC ARROW BRTSHR LASS 47T

LBH 20J STANMORE 56M
CC 56M SYLVIA 3R
 #43158248 CC 8K SYLVIA 11N

AGA 121G STANMORE 20J
 AGA 5C MISS ENERLAD 95K
 WINDY-HILL 26H CASANOVA 8K
 CC 80H SYLVIA 140L

EPDS	CED	BW	WW	YW	MILK	M&G	SC	REA	MB	CHBS
	4.1	1.9	56	83	41*	69*	1.2	.10	.18	111
	.60	.86	.81	.82	.60	.71	.53	.54		

* TRAIT LEADER

EPDs current: November 15, 2021



CHURCHILL SENSATION 028X

Calved: January 14, 2010

AHA#: 43092364

CL 1 DOMINO 9126J
UPS DOMINO 302T
 #42426386 UPS MISS DIAMOND 1353

HH ADVANCE 767G
 CL 1 DOMINETTE 490
 SH DIAMOND 881
 UPS MS MILEHIGH 8330

GH RAMBO 279R
CHURCHILL LADY 7202T
 #42856776 CL 1 DOMINETTE 301N

GH NEON 17N
 HR GOLD DOMINO 251E
 CL 1 DOMINO 9126J
 CL 1 DOMINETTE 8184H

EPDS	CED	BW	WW	YW	MILK	M&G	SC	REA	MB	CHBS
	12.0*	-2.4*	49	68	48*	72*	1.7*	.42	.26*	108
	.79	.95	.92	.92	.88	.86	.63	.62		

* TRAIT LEADER

REFERENCE SIRES



CTY EASY 8803Y 1128Y

Calved: April 4, 2011

AHA#: 43247653

CTY EASY 8803U

#42908092

AGA 10S STAND 137Y

COURTNEY LASS 56M S6282

LBH 20J STANMORE 56M

COURTNEY LASS 56M W927

#43054232

COURTNEY LASS M227

SJSL HI 20 S LAD 10S
GU MISS 46E BRIT 10K
LBH 20J STANMORE 56M
COURTNEY LASS 10L P4282

AGA 121G STANMORE 20J
AGA 5C MISS ENERLAD 95K
FE 135D BRTSHR DOMINO 142F
COURTNEY LASS H827

EPDS	CE	BW	WW	YW	MILK	M&G	SC	REA	MB	CHBS
	9.1	1.4	54	72	16	43	1.3	.14	.25	105
	.39	.68	.56	.50	.31		.33	.11	.14	

EPDs current: November 15, 2021



CTY EASY 0001X 3329U

Calved: March 24, 2013

AHA#: 43553576

CTY EASY 001X

#43149450

CTY EASY 8806U

COURTNEY LASS 4P U846

CTY EASY 8803U

COURTNEY LASS 8803U Y1922

#43247655

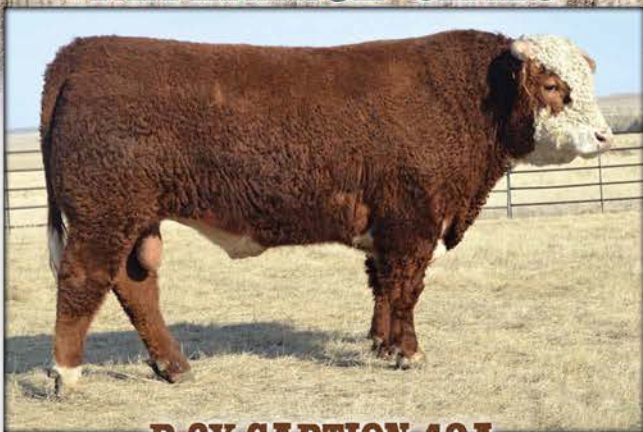
COURTNEY LASS 45J W922

AGA 10S STAND 137Y
COURTNEY LASS 56M S653
LCI 157K RIBSTONE 4P
COURTNEY LASS M246

AGA 10S STAND 137Y
COURTNEY LASS 56M S6282
SNS 67F SKY POWER 45J
COURTNEY LASS 10L R522

EPDS	CE	BW	WW	YW	MILK	M&G	SC	REA	MB	CHBS
	13.7	0.3	44	64	16	38	1.2	.00	.07	85
	.33	.65	.51	.42	.26		.21	.03	.03	

REFERENCE SIRES



R 2Y CAPTION 43A

Calved: March 18, 2013

AHA#: 43398502

SNS 838S MARK LAD 34W
YV 34W MAJOR MARK LAD 2Y
 #43273527 YV 46R MAJOR MAMA 950W

AD 33H LAD 838S
 SNS 232P PYRAMID GAL 1T
 MW MAJOR 46R
 SNS 67F SILVER SKY LADY 107H

R 157K NORTH STAR 54U
R STARLETTE 037
 #43133938 R STARLETTE 803

K 64H RIBSTONE LAD 157K
 R STARLETTE 105
 CJH L1 DOMINO 0041
 R STARLETTE 263

EPDS	CED	BW	WW	YW	MILK	M&G	SC	REA	MB	CHBS
	2.1	2.8	44	63	26	48	0.7	.24	.08	100
	.38	.70	.58	.59	.31	.43	.17	.20		

EPDs current: November 15, 2021



ELSHERE SENSELESS 501

Calved: March 5, 2015

AHA#: 43713873

UPS DOMINO 3027
CHURCHILL SENSATION 028X
 #43092364 CHURCHILL LADY 7202T

CL 1 DOMINO 9126J
 UPS MISS DIAMOND 1353
 GH RAMBO 279R
 CL 1 DOMINETTE 301N

CTY BRITISHER 7721T
LS BRITIANY 226Z
 #43310439 LS ROSA 453

CTY BRITISHER 107L
 COURTNEY LASS 45J R524
 CTY BONANZA 01K
 LS ROBYN 004

EPDS	CED	BW	WW	YW	MILK	M&G	SC	REA	MB	CHBS
	11.1	-0.4	34	52	34	51	1.1	-.05	.17	92
	.41	.67	.55	.48	.26	.28	.03	.03		

REFERENCE SIRES



SR BAKKEN 177E

Calved: March 6, 2017

AHA#: 43825167

SR BAKKEN 62Z

#43310651

UPS NAVARRO

SR SCRIPTIA 926W

UPS DOMINO 5216

UPS MISS DOMINO 5875

SR SCRIPT 187

SR SABRINA 284

BRC FACTOR Y19

SR BENITA 4134B

#43485727

SR DELIGHT 717

F 157K RIBSTONE 763

BRC MISS KAHLUA 205

SR RAPTURE 342

SR ROBYN 257

EPDs	CED	BW	WW	YW	MILK	M&G	SC	REA	MB	CHBS
	6.3	1.6	56	95	37	65	2.2	.53	.10	135
	.42	.64	.52	.50	.27		.41	.20	.20	

EPDs current: November 15, 2021



ELSHERE 8010

Calved: March 21, 2018

AHA#: 43933612

CTY EASY 0001X 3329U

#43553576

CTY EASY 0001X

COURTNEY LASS 8803U Y1922

CTY EASY 8806U

COURTNEY LASS 4P U846

CTY EASY 8803U

COURTNEY LASS 45J W922

CTY EASY 8803U 1128Y

ELSHERE EASY BARITA LUE 567

#43713845

SR BARITA 1030Y

CTY EASY 8803U

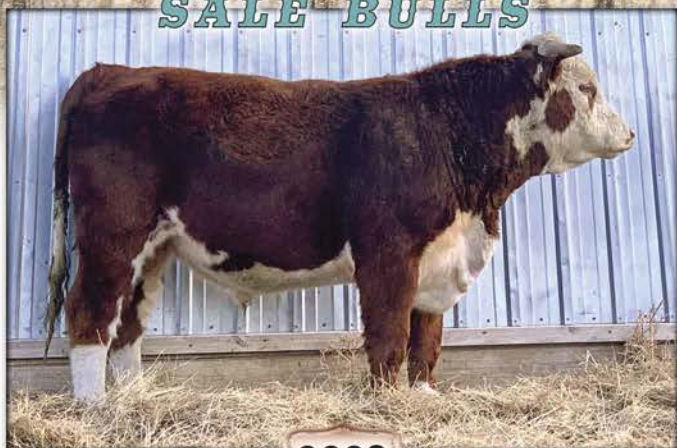
COURTNEY LASS 56M W927

GH ADAMS TOP GUN ET 516T

SR HARLET 794

EPDs	CED	BW	WW	YW	MILK	M&G	SC	REA	MB	CHBS
	12.4	0.0	43	60	17	38	1.1	.06	.16	98
	.27	.37	.27	.23	.13		.10	.03	.03	

SALE BULLS



Elshere 0002
#U44291496

0002

BORN: **April 21, 2020**
BW **72** / WW **678** / YW **987**

CTY EASY 8803U 1128Y

#43247653

CTY EASY 8803U

COURTNEY LASS 56M W927

AGA 10S STAND 137Y

COURTNEY LASS 56M S6282

LBH 20J STANMORE 56M

COURTNEY LASS M227

ELSHERE SERITA 770

#43833565

CHURCHILL SENSATION 028X

SR BARITA 165Y

UPS DOMINO 3027

CHURCHILL LADY 7202T

CTY BRITISHER 7721T

SR MARLA 358

EPDS		CED	BW	WW	YW	MILK	M&G
	SIRE...	9.1	1.4	54	72	16	43
DAM...	5.3	1.3	48	77	32	56	

EPDs current: November 15, 2021



Elshere 0003
#U44291497

0003

BORN: **May 30, 2020**
BW **78** / WW **530** / YW **844**

ELSHERE 8010

#43933612

CTY EASY 0001X 3329U

ELSHERE EASY BARITA LUE 567

CTY EASY 0001X

CTY LASS 8803U Y1922

CTY EASY 8803U 1128Y

SR BARITA 1030Y

HULM LADY 771

#44069924

CHURCHILL SENSATION 028X

HULM INDITA 422

UPS DOMINO 3027

CHURCHILL LADY 7202T

CTY LAD 1115Y

SR INDITA 158Y

EPDS		CED	BW	WW	YW	MILK	M&G
	SIRE...	12.4	0.0	43	60	17	38
DAM...	NA						



Elshere 0003
#U44291498

0004

BORN: **April 16, 2020**
BW **68** / WW **780** / YW **1060**

R 2Y CAPTION 43A

#43398502

YV 34W MAJOR MARK LAD 2Y

R STARLETTE 037

SNS 838S MARK LAD 34W

YV 46R MAJOR MAMA 950W

R 157K NORTH STAR 54U

R STARLETTE 803

SR NORA 6130D

#P43708395

SR NAVARRO 450X

SR HARLET 919W

UPS NAVARRO

SR ROSA 3125

CJH HARLAND 408

SR GETTA 592

EPDS		CED	BW	WW	YW	MILK	M&G
	SIRE...	2.1	2.8	44	63	26	48
DAM...	1.9	4.0	50	83	30	55	



Elshere 0005
#U44215399

0005

BORN: **April 19, 2020**
BW **64** / WW **570** / YW **922**

CHURCHILL SENSATION 028X

#43092364

UPS DOMINO 3027

CHURCHILL LADY 7202T

CL 1 COMINO 9126J

UPS MISS DIAMOND 1353

GH RAMBO 279R

CL 1 DOMINETTE 301N

SR INDITA 4102B

#43485677

UPS INDIGO 8648

SR YAMPETTE 529

UPS DOMINO 5216

UPS MISS NEON 6529

DH YAMPA DOMINATOR

SR WESTY 051

EPDS		CED	BW	WW	YW	MILK	M&G
	SIRE...	12.0*	-2.4*	49	68	48*	72*
DAM...	11.1	-0.3	37	63	22	40	



Elshere 0006
#U44291499

0006

BORN: **May 7, 2020**
BW **82** / WW **660** / YW **932**

ELSHERE 8010
#43933612

CTY EASY 0001X 3329U

CTY EASY 0001X

CTY LASS 8803U Y1922

ELSHERE EASY BARITA LUE 567

CTY EASY 8803U 1128Y

SR BARITA 1030Y

R 2Y CAPTION 43A

YV 34W MAJOR MARK LAD 2Y

SR CAPTIA 658D
#43708051

SR SENITA 270Z

R STARLETTE 037

CHURCHILL SENSATION 028X

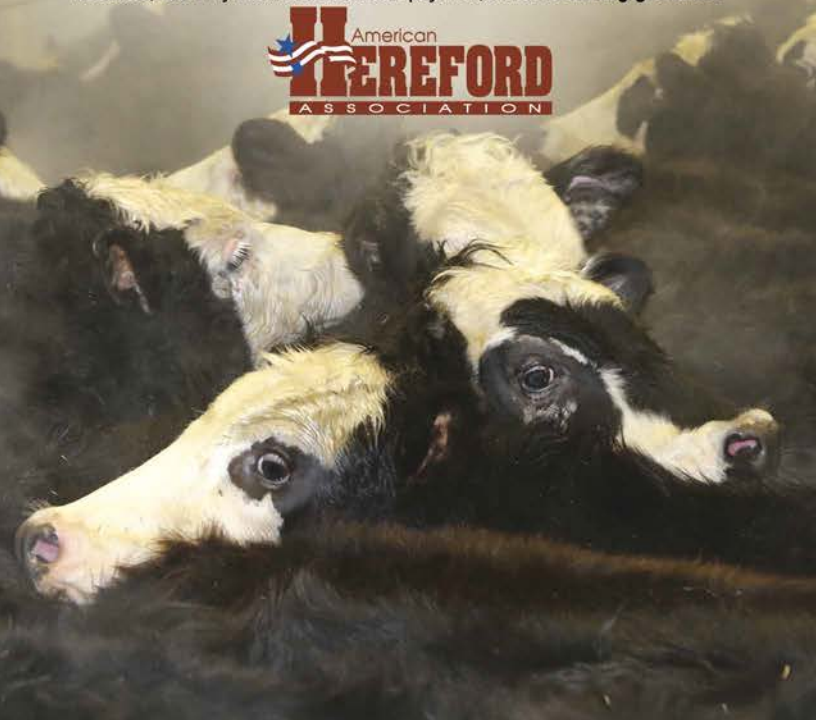
SR RAZIE 093X

EPDS		CED	BW	WW	YW	MILK	M&G
	SIRE...	12.4	0.1	43	60	17	38
DAM...	3.2	1.9	50	77	34	58	

THE BALD-FACED TRUTH

ABOUT HEREFORD GENETICS

It's obvious ... Hereford-sired calves deliver a \$51 increase in net profit per cow, per year. Hereford genetics bring legendary hybrid vigor, improved fertility, feed efficiency and easy-handling docility to your program. Read the research, see why Hereford heterosis pays off, at Hereford.org/genetics.





Elshere 0011
#U44215409

0011

BORN: **April 18, 2020**
BW **70** / WW **506** / YW **820**

CC 129D SUPERMAN 77J
CC 77J STERLING 39T
#43158252

FE 07Y SUPER 129D
CC 42W JULIANA 66Z
LBH 20J STANMORE 56M
CC 8K SLYVIA 11N

AGA 20J STANMORE 21M
ELSHERE MORIE 754
#43831326

AGA 121G STANMORE 20J
AGA 5C MISS ENERLAD 68K
CTY LAD 145Y
MISS KLS BRITISHER 1212

EPDS		CED	BW	WW	YW	MILK	M&G
	SIRE...	4.1	1.9	56	83	41★	69★
DAM...	9.3	1.1	42	61	25	46	



Elshere 0012
#U44215410

0012

BORN: **April 19, 2020**
BW **70** / WW **512** / YW **846**

CTY EASY 0001X
CTY EASY 0001X 3329U
#43553576

CTY EASY 8806U
COURTNEY LASS 4P U846
CTY EASY 8803U
COURTNEY LASS 45J W922

CHURCHILL SENSATION 028X
ELSHERE INDITION 554
#43746905

UPS DOMINO 3027
CHURCHILL LADY 7202T
UPS INDIGO 8648
SR MONITA 625

EPDS		CED	BW	WW	YW	MILK	M&G
	SIRE...	13.7	0.3	44	64	16	38
DAM...	15.3	-3.2	32	48	35	51	



Elshere 0013
#U44291510

0013

BORN: **April 18, 2020**
BW **72** / WW **672** / YW **996**

SR BAKKEN 177E
#43825167

SR BAKKEN 62Z
SR BENITA 4134B

UPS NAVARRO
SR SCRIPTIA 926W
BRC FACTOR Y19
SR DELIGHT 717

HULM ANITA 815
#43965409

CTY EASY 8803U 1128Y
HULM MONTANA 621

CTY EASY 8803U
COURTNEY LASS 56M W927
CHURCHILL SENSATION 028X
KLS MONTANA 1310

EPDS		CED	BW	WW	YW	MILK	M&G
	SIRE...	6.3	1.6	56	95	37	65
	DAM...	NA					



Elshere 0014
#U44215413

0014

BORN: **April 28, 2020**
BW **70** / WW **500** / YW **766**

CTY EASY 0001X 3329U
#43553576

CTY EASY 0001X
COURTNEY LASS 8803U Y1922

CTY EASY 8806U
COURTNEY LASS 4P U846
CTY EASY 8803U
COURTNEY LASS 45J W922

SR INDITA 158Y
#43210027

UPS INDIGO 8648
SR MONITA 625

UPS DOMINO 5216
UPS MISS NEON 6529
MH DAKOTA 3146
SR SHANA 268

EPDS		CED	BW	WW	YW	MILK	M&G
	SIRE...	13.7	0.3	44	64	16	38
	DAM...	10.1	-0.4	29	47	23	37



Elshere 0015
#U44215415

0015

BORN: **April 22, 2020**
BW **71** / WW **528** / YW **934**

CC 129D SUPERMAN 77J
CC 77J STERLING 39T
#43158252

FE 07Y SUPER 129D
CC 42W JULIANA 66Z
LBH 20J STANMORE 56M
CC 8K SLYVIA 11N

R 2Y NORTH STAR 56B
BJ 56B MAJOR MAMA 7020
#43866660

YV 34W MAJOR MARK LAD 2Y
R STARLETTE 037
KB L1 DOMINO 396A
BJ BECKY 3121

EPDS		CED	BW	WW	YW	MILK	M&G
	SIRE...	4.1	1.9	56	83	41★	69★
DAM...	5.4	2.3	52	80	24	50	



Elshere 0016
#U44221526

0016

BORN: **April 24, 2020**
BW **72** / WW **530** / YW **900**

UPS NAVARRO
SR BAKKEN 62Z
#43310651

UPS DOMINO 5216
UPS MISS DOMINO 5875
SR SCRIPT 187
SR SABRINA 284

CTY EASY 0001X 3329U
MISS KLS EASY BRITISHER 1630
#43880419

CTY EASY 0001X
CTY LASS 8803U Y1922
CTY LAD 145Y
MISS KLS BRITISHER 1203

EPDS		CED	BW	WW	YW	MILK	M&G
	SIRE...	6.3	1.6	56	95	37	65
DAM...	8.7	1.9	42	63	14	35	



Elshere 0018
#U44215417

0018

BORN: **April 19, 2020**
BW **73** / WW **502** / YW **848**

CTY EASY 0001X
CTY EASY 0001X 3329U
#43553576 COURTNEY LASS 8803U Y1922

CTY EASY 8806U
COURTNEY LASS 4P U846
CTY EASY 8803U
COURTNEY LASS 45J W922

GENETIC 712 LAD 0928
LADY 0928 LAD E773
#43791973 LADY 160 STANDARD A323

GENETIC 21M LAD 0712
AD 114L GENETIC LASS 0716
F 38T STANDARD LAD 160
LADY WORLD CLASS 032

EPDS		CED	BW	WW	YW	MILK	M&G
	SIRE...	13.7	0.3	44	64	16	38
DAM...	2.5	4.4	53	81	26	52	



Elshere 0019
#U44215419

0019

BORN: **April 23, 2020**
BW **73** / WW **538** / YW **850**

SR BAKKEN 62Z
SR BAKKEN 177E
#43825167 SR BENITA 4134B

UPS NAVARRO
SR SCRIPTIA 926W
BRC FACTOR Y19
SR DELIGHT 717

BCC BILLY THE KID 330A
SR TAMMY 761E
#43825166 SR NAVITA 0125X

NJW 73S W18 HOMETOWN 10Y
BCC SWEET CAROLINE 071X
UPS NAVARRO
SR MARTY 454

EPDS		CED	BW	WW	YW	MILK	M&G
	SIRE...	6.3	1.6	56	95	37	65
DAM...	-3.6	5.9	50	91	24	49	



Elshe 0022
#U44215423

0022

BORN: **April 24, 2020**
BW **78** / WW **536** / YW **902**

SR BAKKEN 177E
#43825167

SR BAKKEN 62Z
SR BENITA 4134B

UPS NAVARRO
SR SCRIPTIA 926W
BRC FACTOR Y19
SR DELIGHT 717

BJ 56B MAJOR MAMA 7032
#43866690

R 2Y NORTH STAR 56B
BJ 27A SARA 5047

YV 34W MAJOR MARK LAD 2Y
R STARLETTE 037
R 0141 NORTH STAR 27A
BJ PATTY 0161

EPDS		CED	BW	WW	YW	MILK	M&G
	SIRE...	6.3	1.6	56	95	37	65
DAM...	6.7	3.1	56	85	27	55	



Elshe 0025
#U44215429

0025

BORN: **April 22, 2020**
BW **79** / WW **512** / YW **818**

SR BAKKEN 177E
#43825167

SR BAKKEN 62Z
SR BENITA 4134B

UPS NAVARRO
SR SCRIPTIA 926W
BRC FACTOR Y19
SR DELIGHT 717

SR SCOPIA 7137E
#43825369

CL 1 DOMINO 0130X
SR SYNTHIA 313A

CL 1 DOMINO 860U
CL 1 DOMINETTE 440P
FA 105T BRITISHER 5X
SR BRITANY 0103X

EPDS		CED	BW	WW	YW	MILK	M&G
	SIRE...	6.3	1.6	56	95	37	65
DAM...	3.2	3.2	62	101	23	54	



Elshere 0026
#U44291503

0026

BORN: May 18, 2020
BW 79 / WW 590 / YW 868

ELSHERE 8010
#43933612

CTY EASY 0001X 3329U

CTY EASY 0001X

CTY LASS 8803U Y1922

ELSHERE EASY BARITA LUE 567

CTY EASY 8803U 1128Y

SR BARITA 1030Y

CHURCHILL SENSATION 028X

UPS DOMINO 3027

HULM MONTANA 622
#43746881

MISS KLS MONTANA 1317

CHURCHILL LADY 7202T

CTY MONTANA 047X

MISS KLS SUNSHINE 1007

EPDS		CED	BW	WW	YW	MILK	M&G
	SIRE...	12.4	0.0	43	60	17	38
	DAM...	12.4	-1.5	43	62	34	55



Elshere 0028
#U44215433

0028

BORN: April 27, 2020
BW 79 / WW 542 / YW 840

CTY EASY 0001X 3329U
#43553576

CTY EASY 0001X

CTY EASY 8806U

COURTNEY LASS 4P U846

COURTNEY LASS 8803U Y1922

CTY EASY 8803U

COURTNEY LASS 45J W922

KLS BIG BRITISHER 1035

CTY BIG BRITISHER 789T

MISS KLS BRITISHER 1213
#43349765

MS RED STANDARD EXTRA 1017

MISS KLS RIBSTONE 18A 0732

CTY RED STANMORE 6617S

MISS KLS EXTRA 427

EPDS		CED	BW	WW	YW	MILK	M&G
	SIRE...	13.7	0.3	44	64	16	38
	DAM...	2.9	3.3	39	62	13	33



Elshere 0029
#U44215434

0029

BORN: **April 27, 2020**
BW **81** / WW **606** / YW **942**

AGA 20J STANMORE 21M

#4275505

AGA 121G STANMORE 20J
AGA 5C MISS ENERLAD 68K

AGA 4016D STANMORE 121G
AGA 40E MS STANMORE 80G
XTC 15Z ENERLAD STAN 5C
AGA 154F MS BRITISHER 159H

SR INDITA 4107B

#43486294

UPS INDIGO 8648
SR HARLET 8118

UPS DOMINO 5216
UPS MISS NEON 6529
CJH HARLAND 408
SR SANDMAN 4114

EPDS		CED	BW	WW	YW	MILK	M&G
	SIRE...	6.4	2.4	50	74	31	56
DAM...	4.2	1.9	47	74	22	45	



Elshere 0030
#U44215435

0030

BORN: **April 20, 2020**
BW **82** / WW **520** / YW **916**

AGA 20J STANMORE 21M

#4275505

AGA 121G STANMORE 20J
AGA 5C MISS ENERLAD 68K

AGA 4016D STANMORE 121G
AGA 40E MS STANMORE 80G
XTC 15Z ENERLAD STAN 5C
AGA 154F MS BRITISHER 159H

BJ 56B MAJOR MAMA 7018

#43866683

R 2Y NORTH STAR 56B
BJ 165 TERRIE 5027

YV 34W MAJOR MARK LAD 2Y
R STARLETTE 037
K ADVANCER LAD 165
BJ 340 DELLA 2170

EPDS		CED	BW	WW	YW	MILK	M&G
	SIRE...	6.4	2.4	50	74	31	56
DAM...	5.5	3.2	53	79	21	48	



Elshere Red Bakken 0033
#U44221528

0033

BORN: **April 25, 2020**
BW **82** / WW **546** / YW **888**

SR BAKKEN 62Z
#43310651

UPS NAVARRO
SR SCRIPTIA 926W

UPS DOMINO 5216
UPS MISS DOMINO 5875
SR SCRIPT 187
SR SABRINA 284

ELSHERE EASY RED 551
#43713812

CTY EASY 8803U 1128Y
MISS KLS RED STANDARD 1106

CTY EASY 8803U
COURTNEY LASS 56M W927
CTY RED STANMORE 6617S
MISS KLS BRITISHER 0520

EPDS		CED	BW	WW	YW	MILK	M&G
	SIRE...	2.5	3.0	67*	117*	50*	84*
DAM...	11.7	0.9	50	71	17	42	

★ TRAIT LEADER



Elshere 0034
#U44215449

0034

BORN: **April 24, 2020**
BW **83** / WW **504** / YW **852**

CTY EASY 0001X 3329U
#43553576

CTY EASY 0001X
COURTNEY LASS 8803U Y1922

CTY EASY 8806U
COURTNEY LASS 4P U846
CTY EASY 8803U
COURTNEY LASS 45J W922

MISS KLS STANMORE 0938
#43050638

CTY RED STANMORE 6617S
MISS KLS 18A SUNSHINE 0105

LBH 20J STANMORE 56M
COURTNEY LASS 236J P445
CTY SUNSHINE 810H
MISS KLS EXTRA 194

EPDS		CED	BW	WW	YW	MILK	M&G
	SIRE...	13.7	0.3	44	64	16	38
DAM...	1.4	3.8	42	70	19	40	



Elshere 0035
#U44215451

0035

BORN: **April 18, 2020**
BW **84** / WW **540** / YW **910**

UPS DOMINO 3027
CHURCHILL SENSATION 028X
#43092364 CHURCHILL LADY 7202T

CL 1 COMINO 9126J
UPS MISS DIAMOND 1353
GH RAMBO 279R
CL 1 DOMINETTE 301N

CTY RED STANMORE 6617S
MISS KLS RED STANDARD 1107
#43242324 MISS KLS BRITISHER 15L 0608

LBH 20J STANMORE 56M
COURTNEY LASS 236J P445
CTY BRITISHER 15L
MISS KLS 41F 001

EPDS		CED	BW	WW	YW	MILK	M&G
	SIRE...	12.0*	-2.4*	49	68	48*	72*
DAM...	0.6	5.6	46	78	9	32	



Elshere 0037
#44215456

0037

BORN: **April 23, 2020**
BW **84** / WW **588** / YW **950**

YV 34W MAJOR MARK LAD 2Y
R 2Y CAPTION 43A
#43398502 R STARLETTE 037

SNS 838S MARK LAD 34W
YV 46R MAJOR MAMA 950W
R 157K NORTH STAR 54U
R STARLETTE 803

BCC BILLY THE KID 330A
SR TAMMY 5112C
#43613950 SR JOEY 179Y

NJW 73S W18 HOMETOWN 10Y
BCC SWEET CAROLINE 071X
BB 626S NEON 9067
SR SCRIPTIA 939W

EPDS		CED	BW	WW	YW	MILK	M&G
	SIRE...	2.1	2.8	44	63	26	48
DAM...	5.6	2.6	50	85	26	52	



Elshere 0038
#U44291505

0038

BORN: **April 26, 2020**
BW **87** / WW **572** / YW **942**

CTY EASY 8803U 1128Y
#43247653

CTY EASY 8803U
COURTNEY LASS 56M W927

AGA 10S STAND 137Y
COURTNEY LASS 56M S6282
LBH 20J STANMORE 56M
COURTNEY LASS M227

ELSHERE SATIE 764
#43833563

CHURCHILL SENSATION 028X
LS BRITIANY 226Z

UPS DOMINO 3027
CHURCHILL LADY 7202T
CTY BRITISHER 7721T
LS ROSA 453

E P D S		CED	BW	WW	YW	MILK	M&G
	SIRE...	9.1	1.4	54	72	16	43
DAM...	8.4	1.6	51	78	33	59	

* Breed Trail Leader



Elshere 0039
#U44215459

0039

BORN: **April 25, 2020**
BW **85** / WW **500** / YW **870**

SR BAKKEN 177E
#43825167

SR BAKKEN 62Z
SR BENITA 4134B

UPS NAVARRO
SR SCRIPTIA 926W
BRC FACTOR Y19
SR DELIGHT 717

SR TAMMY 7127E
#43825162

BCC BILLY THE KID 330A
SR BRITANY 0103X

NJW 73S W18 HOMETOWN 10Y
BCC SWEET CAROLINE 071X
CTY BRITISHER 7721T
SR HARLET 859

E P D S		CED	BW	WW	YW	MILK	M&G
	SIRE...	6.3	1.6	56	95	37	65
DAM...	-0.3	5.9	55	94	25	53	



Elshere 0041
#U44215466

0041

BORN: **April 23, 2020**
BW **86** / WW **548** / YW **864**

AGA 121G STANMORE 20J
AGA 20J STANMORE 21M
#42755505 AGA 5C MISS ENERLAD 68K

AGA 4016D STANMORE 121G
AGA 40E MS STANMORE 80G
XTC 15Z ENERLAD STAN 5C
AGA 154F MS BRITISHER 159H

CTY EASY 0001X 3329U
MISS KLS EASY BRITISHER 1655
#43880490 MISS KLS BRITISHER 15L 0835

CTY EASY 0001X
COURTNEY LASS 8803U Y1922
KLS BRITISHER 15L 0540
MISS KLS 41F 001

EPDS		CED	BW	WW	YW	MILK	M&G
	SIRE...	6.4	2.4	50	74	31	56
	DAM...	8.5	2.9	42	70	11	32



Elshere 0042
#U44215469

0042

BORN: **April 23, 2020**
BW **88** / WW **502** / YW **880**

YV 34W MAJOR MARK LAD 2Y
R 2Y CAPTION 43A
#43398502 R STARLETTE 037

SNS 838S MARK LAD 34W
YV 46R MAJOR MAMA 950W
R 157K NORTH STAR 54U
R STARLETTE 803

CTY MONTANA 047X
MISS KLS MONTANA 1309
#43561580 MISS KLS RIBSTONE 1114

CTY MONTANA 6633S
COURTNEY LASS 9919J S691
KLS STANMORE 0935
MS KLS LYNN 15L EXTRA 0717

EPDS		CED	BW	WW	YW	MILK	M&G
	SIRE...	2.1	2.8	44	63	26	48
	DAM...	8.7	0.7	36	49	17	35



Elshere 0043
#U44221529

0043

BORN: **April 26, 2020**
BW **88** / WW **542** / YW **922**

SR BAKKEN 62Z
#43310651

UPS NAVARRO
SR SCRIPTIA 926W

UPS DOMINO 5216
UPS MISS DOMINO 5875
SR SCRIPT 187
SR SABRINA 284

ELSHERE MISS STANDARD 565
#43752912

CTY EASY 8803U 1128Y
MS KLS RED STANDARD 15L 1002

CTY EASY 8803U
COURTNEY LASS 56M W927
CTY RED STANMORE 6617S
MISS KLS BRITISHER 15L 0608

EPDS		CED	BW	WW	YW	MILK	M&G
	SIRE...	2.5	3.0	67*	117*	50*	84*
DAM...	5.6	3.0	45	68	10	32	

★ TRAIT LEADER



Elshere 0044
#U44221530

0044

BORN: **April 27, 2020**
BW **99** / WW **604** / YW **980**

SR BAKKEN 62Z
#43310651

UPS NAVARRO
SR SCRIPTIA 926W

UPS DOMINO 5216
UPS MISS DOMINO 5875
SR SCRIPT 187
SR SABRINA 284

ELSHERE TESSIE 656
#43746511

CTY LAD 145Y
SR TESSIE 1119Y

AGA 72R LAD 49U
COURTNEY LASS K411 U8453
HH ADVANCE 8203U
SR NICKY 780

EPDS		CED	BW	WW	YW	MILK	M&G
	SIRE...	2.4	3.0	*68	*117	*50	*84
DAM...	2.4	4.5	58	80	23	52	



Elshere 0045
#U44291507

0045

BORN: **April 22, 2020**
BW **92** / WW **620** / YW **976**

ELSHERE SENSELESS 501
#43713873

CHURCHILL SENSATION 028X
LS BRITIANY 226Z

UPS DOMINO 3027
CHURCHILL LADY 7202T
CTY BRITISHER 7721T
LS ROSA 453

HULM MISS 522
#43746668

CTY LAD 145Y
MISS KLS MONEY 1303

AGA 72R LAD 49U
COURTNEY LASS K411 U8453
CTY MONEY 9905W
MS KLE BRITISHER 15L 0604

E P D S		CED	BW	WW	YW	MILK	M&G
	SIRE...	11.1	-0.4	34	52	34	51
	DAM...	-1.9	7.4	56	92	20	48



Elshere 0046
#U44291511

0046

BORN: **April 23, 2020**
BW **92** / WW **536** / YW **904**

SR BAKKEN 177E
#43825167

SR BAKKEN 62Z
SR BENITA 4134B

UPS NAVARRO
SR SCRIPTIA 926W
BRC FACTOR Y19
SR DELIGHT 717

HULM ANDREA 814
#43965410

ELSHERE SENSELESS 501
HULM LADY 423

CHURCHILL SENSATION 028X
LS BRITIANY 226Z
CTY LAD 1115Y
SR INDITA 232Z

E P D S		CED	BW	WW	YW	MILK	M&G
	SIRE...	6.3	1.6	56	95	37	65
	DAM...	NA					



My Sponsors are so very important to me being able to continue down the Rodeo road. I couldn't do it without them. I appreciate each and every one of them!
 — Cole Elshere
 2019 INFR
 Saddle Bronc
 World Champion

THANKS...

SweetPro

EQUIPRIDE
EQUILIX

STUBER RANCH

EDGAR BROS.
-ANGUS-
 ROCKHAM, SD



MACKSTEEL



C5 MFG.



ROCKROLL DENIM

FETTIG Pro Rodeo



Selling following Elshere Herefords bulls...

SALE FEATURE!

50 Elshere F1 Blk Baldy Heifers

Purchased as calves by Luke Moore. A.I. bred to ABS Hickock for March 1st calving. Clean-up sires were Calving Ease bulls from Johnson-Rose Angus. Should calve March 1 – March 10.

For more information on the heifers, call:
Luke Moore 507/828-4390



2020 NFR ...Cole, Kyndra & Everley with Andy & Donella Elshere!

ELSHERE HEREFORDS
18974 Usta Rd. • Faith, South Dakota 57626



LOT 0044
Sire: SR Bakken 62Z

**TAKE ADVANTAGE OF HYBRID VIGOR BY
CAPITALIZING ON HEREFORD GENETICS!**

TO: